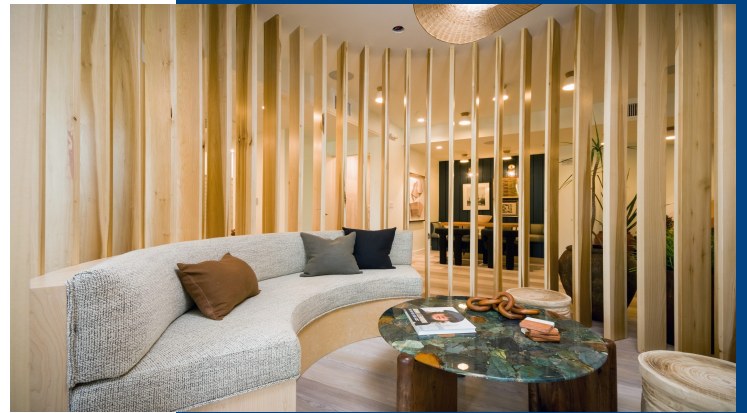


# THE CHARLIE



## Description

The Charlie consists of 28 harmonious units of either 1 or 2 bedrooms. Contemporary in design, this three-story podium building is just under 50,000 SF. The open courtyard includes a BBQ island, firepit lounge space and AI Fresco Eatery, making it the perfect space to gather with friends. The nook acts as a communal area giving residents a place for collaboration. For those who prefer a more private space, a conference room can be found close by. The clubhouse offers lounge areas for entertainment and a catering kitchen for group dining. Best of all, each unit has its own private balcony.

## Location

11628 La Mirada Blvd, La Mirada, CA  
90638

## Sector

Multi-Family / Apartments / Ground Up

## Size

31,441 SF

## Construction Type

V-A

## Project Duration

16 Months